

This section describes installing Accucadd from CD and from an Internet download. Accucadd will run on the minimum hardware configuration recommended for your version of Windows. For best performance we suggest adding 16MB more memory than the minimum. You will also need about 15MB of free disk space to install Accucadd.

Introduction Before you start to install Accucadd, your computer must be set up and ready for use. You should also understand how to use Windows. You must have an input device—a mouse or a digitizer. You cannot control Accucadd using only the keyboard. You will probably want to have a printer so that you can get paper copies of your drawings, but this is not required in order to run Accucadd.

If you have trouble with the installation process, consult your supplier.

Over installing If you install Accucadd “over” (in the same directory as) any previous version of Accucadd, **please be aware that you can over-write (destroy) the Introductory Library provided with Accucadd. Since many people use this introductory library to store their drawings in, this means that they will lose their drawings.** For this reason we don’t recommend over installation. Back-up your library before re-installing, or use a different directory for a new version of Accucadd.

CD drive You will need a CD drive to read the Accucadd CD, if you have one. Some versions of Accucadd are distributed over the Internet in self-installing format.

Operating system Accucadd requires Windows 98, Windows NT 4.0, or later. It will work well with Windows 2000, and with Windows XP.

Don’t try to run two copies of Accucadd on one computer at the same time under Windows. It works - but the results can be confusing!

Graphics Display Card Accucadd supports all Windows compatible cards. We suggest 800 x 600 resolution and 256 colors.

If you are using a small (less than 15 inch visible diagonal) monitor, we do not recommend higher resolutions than 800 x 600 as the fine lines drawn using Accucadd lineweight 1 (single pixel) can be difficult to see. You can compensate for this if you wish by drawing in heavier lineweights, but this process can become self-defeating.

All graphics cards require different drivers for different versions of Windows. Accucadd makes strong demands on the graphics card and driver combination, and can show up incompatibilities and inconsistencies which other programs (e.g. Word Processors) do not encounter. Always ensure you are using a driver that is:

designed for your specific graphics card **AND**
your specific version of Windows **AND**
is the latest available.

B.3 Peripherals Two sorts of add-on devices are important for use with Accucadd: Input devices (mice or digitizer) are used for controlling Accucadd (and Windows) and entering drawings, while printers are used for creating drawings on paper. Sometimes large format printers are called plotters. All the devices you use with Accucadd must have Windows drivers. Accucadd only uses Windows input and output devices.

Input device A mouse or digitizer. Any device that works with Windows will work with Accucadd.

Printer A printer can be used both for “Snapshot” screen dumps, or for high quality output.

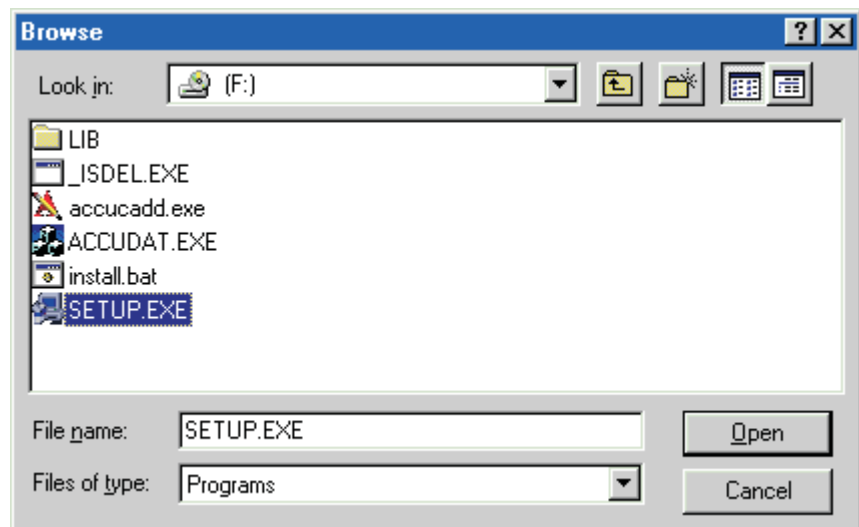
Any printer that works with Windows will work with Accucadd. Several different printers can be connected, and the one you use selected through the conventional Windows “Print” dialog when you are about to print. Printers can be networked (remote) and you can FAX drawings if you have a FAX program installed.

Conversely, a printer that doesn’t work with Windows WILL NOT WORK WITH ACCUCADD. If you can’t print text to the printer using Windows Notepad (or Word) then you won’t be able to print Accucadd drawings on it either.

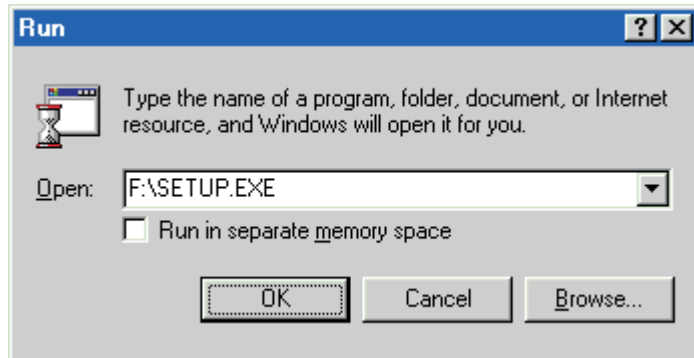
Installing Accucadd from CD Before Accucadd can be used, it needs to be placed on your fixed disk. This process is called ‘Installation’.

The Accucadd Setup program is used to perform the installation. To install Accucadd, follow this procedure:

Insert the Accucadd CD into the CD drive.
If the Setup program does not automatically start running in a 30 seconds then:



From the Start button, click Run... and Browse to your CD drive. In the Browse dialog (above), double click "setup" or "setup.exe"

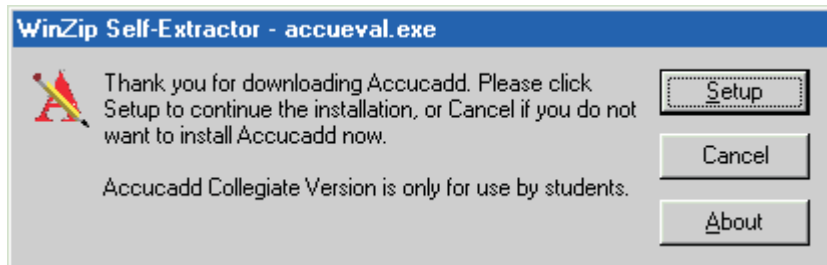


Click OK on the Run dialog (above)

The Accucadd installation program will run. Follow the screen directions.

Installing Accucadd from a Download

Navigate to the downloaded image using Start: Run... or Windows Explorer, and double click on accueval.exe. You'll get the WinZip installation dialog, below:



Click the Setup button, and installation will proceed as for the CD, above.

Install Intro Library

The Configuration program asks if you wish to install the Accucadd Introductory Library. Type **Y** to install it, **N** if you don't want it. If you want the Introductory Library, you are prompted to enter a pathname for the directory it will be installed in. If you don't understand pathnames, just press **ENTER** to use the default of **C:\LIB**. If a library already exists with that pathname, the Configuration program will warn you, and allow you to enter a new pathname, or replace the existing library with the Introductory library.

Uninstall

You can remove Accucadd by going to the Control Panel and selecting Add/Remove programs, in the usual way. The Uninstall program will not remove files created since installation, such as your various settings, and drawings. You will have to delete these yourself.