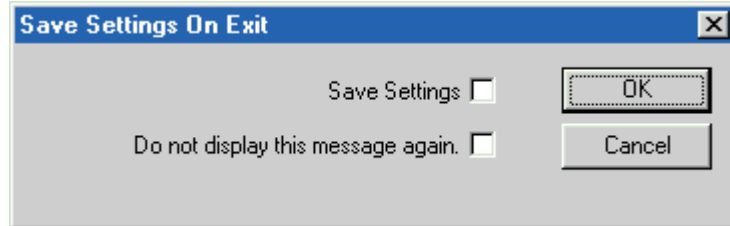


Configuring Accucadd is the process of telling it how you want it to look and what settings you want to be present when you next start up the program. You do not need to configure Accucadd before you use it.

Configuring Configuration takes place when you exit the program. When you click Exit the first thing you get is the Save Settings dialog:



Until you are SURE that you know what you are doing, do NOT check the “Do not display this message again” check box. Make sure that this box is always clear. For more information on this, see below.

Please note that Save Settings has nothing at all to do with saving (or filing) your drawings. It only affects the configuration.

For configuring Accucadd, the “Save Settings” check box is the important one. If this box is clear (not checked) then the current Accucadd settings are not saved. Next time you start Accucadd it will start up using the same settings as it used when it started up this time. Any and all changes to the settings that you made since starting it up this time will be discarded.

If it is checked, then next time Accucadd starts up it will start up using the same settings that it now has. Any and all changes to the settings that you made since starting it up this time will be saved and used next time.

Pallette Positions and settings

Accucadd “remembers” the last position of every palette. These positions can be saved so that the palettes are in the same position next time you use Accucadd. It doesn’t matter whether the palette is visible or not when you save the settings - all palette positions are saved.

Along with the position, Accucadd also remembers the palette settings - which function(s) were active (highlighted, or “on”) and what values were present in any type-in boxes (such as text height, grid spacing, etc.).

Styles

Styles are lists of settings. There are many places where Accucadd uses styles: for example, all the various parameters that apply to drawing text are saved as a style, and similarly for parallels. The names of currently selected styles are also saved when you save the setup. Saving the setup does not save the style file - this was done

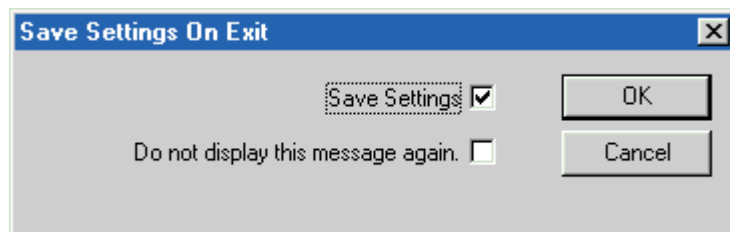
when the style was given a name. It just remembers which style was in use.

Drawing settings Accucadd draws in a particular color, using selected line weights and styles, on the active layer; the drawing is shown on a sheet of paper, at a specified scale, using selected units of measure. All these variables - Layer, Color, Units, Scale, Paper Size, Line Weight and Line Style - are saved when you save settings.

If you have a second drawing page open, the corresponding values for that page are also saved, and will be used when you next select File: New Page.

Setting up a new configuration Save Settings is an all or nothing operation. You can't selectively save one or two palette positions - you must save everything. Accordingly it's best to do the setup separately from any drawing.

Start Accucadd, and make any changes you want to make. Check all the palettes for position and content. Include your grid and angle trap settings. Check and change, if needed, your paper and drawing settings. Don't forget Page 2 if that's important. Wipe the drawing page (and page 2 if active), then select Exit.



When the Save Settings dialog appears, ensure that Save Settings is checked, as above, then click OK. As soon as you click OK your settings are saved.

Locking the settings The "Do not display..." check box is provided to lock the settings you have chosen. Once you are sure the settings are the way you want them, and you are sure you don't want to change them again, check the "Do not display" box before clicking OK.

Be careful - you may never be able to change the settings again!

Restoring access to settings We had so many requests to stop "unauthorized" changes to settings that we adopted the above approach. For most people it's a one time decision. It's worth noting here that re-installing Accucadd will not restore access to the settings, so don't bother trying it!

To restore access you must make a registry change. If you don't understand what that means, please don't try and do it. If you do

understand the Windows Registry, and know how to change it, then this information will be useful to you.

The dialog box controls the value of two registry entries. They are under the registry key:

HKEY_CURRENT_USER\Software\Accucadd\Accucadd\SaveSettings

and are called DisplayDialog and Save. They are considered Boolean, and can each take the value Zero (False) or Non Zero (True). The effect of these values is as follows:

| Name – Value | Effect |
|--------------------------|---|
| DisplayDialog – zero | Do not show “Save Settings” dialog on exit |
| DisplayDialog – non-zero | Show Save Settings dialog on exit |
| Save – zero | Do not save the current settings for next start-up |
| Save – non-zero | Save the current settings for next start-up |

If you know how to edit the Registry, and you have the required access rights, you may change these entries while Accucadd is not running. (If you change them while Accucadd is running, it may change them again when you exit the program). This is one way to get the Save Settings dialog back again if you have used the “**Do not display ... again**” check box. The usual values used are 0x00 for zero and 0x01 for non-zero.

