

This function saves a drawing on a library index, and it is the same as File: Save. If you prefer to save the drawing as a file, use Library: Export RDF. If you are using Booking, this function allows you to un-book a drawing.

Filing (Saving) a drawing for the first time

Select Library: File (or File: Save) and the current index is displayed. This shows the drawings saved on that index together with information about the index itself, and a palette for changing index and the cursor size. The Library Index Page is described below.

Make sure the current index is the one you want to File on to—if not, see Changing Indexes, below. Select the image size you want by positioning the cursor over one of the Box Size numbers (1 - 16) in the Box Size palette, and clicking the button. A box of this size is displayed when you move the cursor back to the index area. Position the box on an empty space on the index and click to file the drawing.

When you have positioned and clicked, a dialog appears, for you to confirm that you have chosen the correct position for filing, and offering you the option of labeling the drawing.

Move

Reposition the drawing

File

File the drawing at the indicated position, without a label.

+Label

File the drawing and label its image (see below)

+Label
Adding a label

If you select '+Label' from the window, the drawing will be filed and a label added to its image on the index. The label is only for annotation of the index; it is not added to the drawing proper. It is recorded in the Library Log file, however. A Text Edit dialog pops up on the drawing screen to allow you to enter the label — use it just as you would for entering text into a drawing. A border in the text editor window show you how much label text you can fit onto the box size you have used. Windows requires that you click the mouse in the box before you can type text into it.

Filing a drawing you filed before

If you use File after Loading a drawing, Accucadd assumes you want to file the new drawing 'over' the old version, updating it. It presents a dialog with four options:

Move

give a free cursor to put the drawing someplace else.

File

File the drawing without a label. A warning dialog with the legend "Update" is produced; click **Yes** to replace the old drawing. Clicking **No** will have the same effect as if you had selected Move, above.

+Label

File the drawing, and label it, as described above.

+Keep Image

File the drawing, as described above, but keep the old image rather than drawing a new one. This can save time, and avoid creating an image too complex to understand. It also preserves the label.

Overfileing It is possible to Overfile (re-use the index space) if that drawing is no longer needed. This operation is referred to as an `overfile`. If the box cursor covers exactly one drawing, it is permissible to overfile that drawing.

If you file the drawing, a warning palette is produced with the legend "Overfile"; select **Yes** to perform the overfile, or **No** to select another space on the index.

Valid Overfile positions Whatever the sizes of the cursor box and the "old" drawing box, the bottom-left corners of the new and old drawings must coincide for the File to be valid. If the cursor box is smaller than the "old" drawing, then filing using the smaller cursor frees up the space surrounding the "old" drawing for re-use. If the cursor box is larger than the old drawing, additional index space is taken up by the new drawing. Of course, if the cursor is the same size as the "old" drawing, the new image simply replaces the old.

Remember, the bottom-left corners of the new and old drawings must coincide for the File to be valid. If this is not the case, or if the box cursor extends over more than one drawing, you'll get the "Invalid file position" message, and you should move the cursor elsewhere.

**Effects of Overfile–
Global Update** When a drawing that has been used as an insert is over-filed, the drawing that has replaced it on the index will also replace it in all of the drawings that use it as an insert.

For example, if drawings A and B both have C inserted into them, and C is then over-filed by D, then when A and B are Loaded, D will have replaced C within them. This will not be obvious until the drawings are Loaded.

This technique is used for editing whole libraries, replacing or updating inserts (symbols) throughout the library. Care is needed, however. The full ramifications of the process are explained in Appendix D, 'Library Management'.

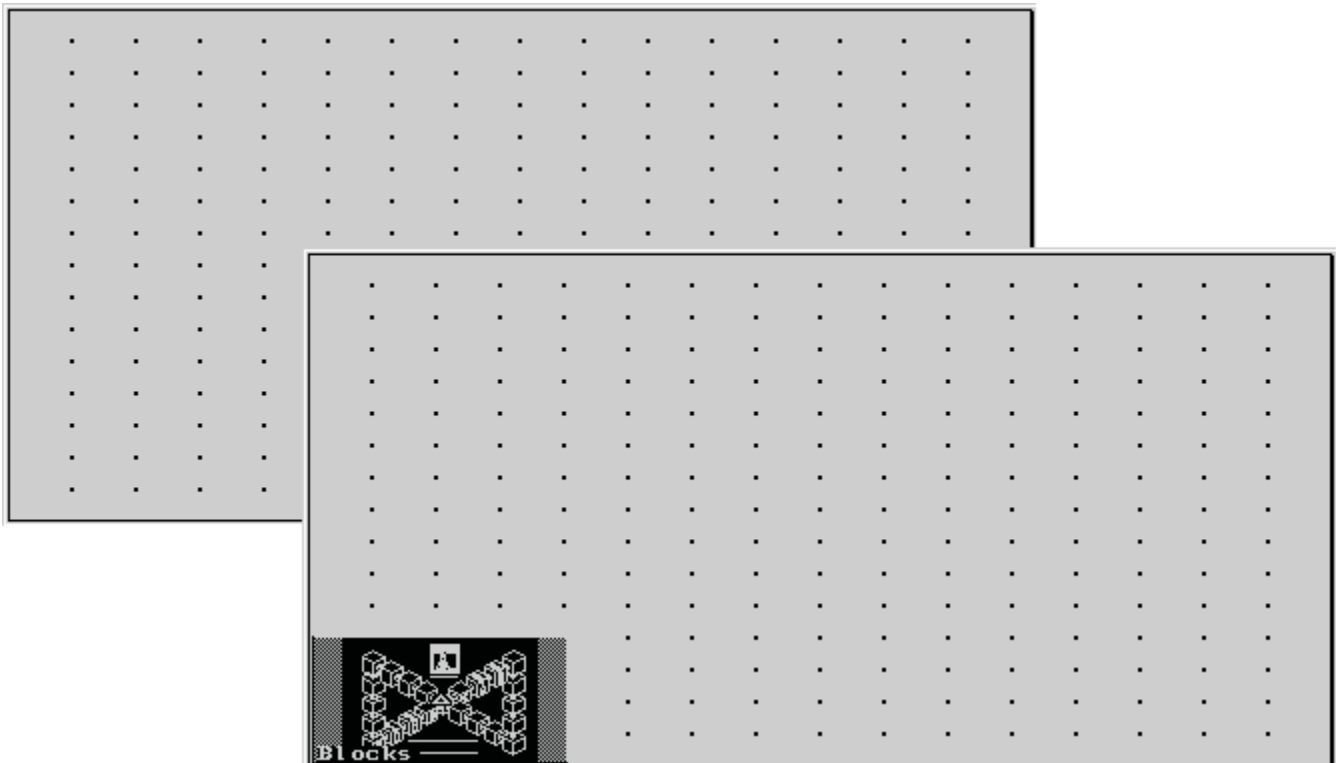
A log is kept of all the File operations done in the library: see Book & Log, later in this section.

The Library Index Page Accucadd Libraries are made up of Index pages. Drawings are usually accessed by clicking on the images of them stored on an index page.

The drawing images

The library index page is divided into two parts. The larger part, on the left, contains images of all the drawings that have been filed on that index. If it is a new index, it will be “blank”. You will see that it is divided up into an array of rectangles or unit boxes. There are 16 of them up and down, and 16 left to right—256 in all. The unit box corners are marked by dots.

You can see this below, where a blank index page is shown “underneath” an index page with a drawing. The drawing was filed using a

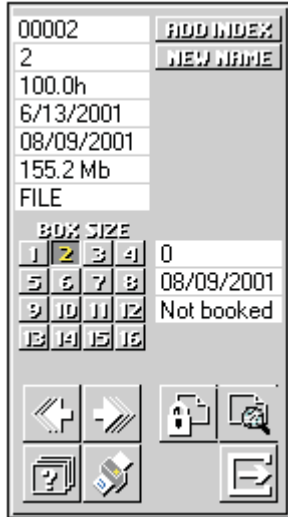


“Size 4” box, as it is 4 “unit dots” high and 4 “unit dots” wide. Boxes can be from 1 unit up to 16 units—the entire index page. Boxes are always the same shape—you can’t use a 4 unit by 3 unit box.

The unit boxes are referred to by number, starting with 0 at the lower right, and increasing left to right, then bottom to top, so that the top right unit box is number 255. The drawing shown on the index page, above, is therefore said to be in “box number 0” or “position 0”. You’ll see a reference to this in the Accucadd Windows Title Bar when you Load a drawing.

There is no fixed relationship between the size of the drawing and the size of the box you file it in. Although it usually makes sense to put a big drawing in a bigger box than a small drawing, Accucadd does not force you to do this.

The information dialog



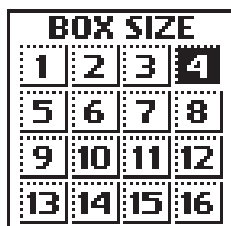
The smaller part, to the right, contains **information** about the index, the library, the disk drive (and other “system” information), and it contains **icons** to allow you to select indexes and control how and where drawings are filed.

The **information** fields on the dialog are:

1	00002
2	2
3	100.0h
4	6/13/2001
5	08/09/2001
6	155.2 Mb
7	FILE

1. Index Number
2. Index Name
3. Version of Accucadd used to create the index
4. The date the index was created
5. The date the index was last Filed on
6. Free Space: the available space on the Library's disk
7. Current Function: FILE, LOAD or INSERT

The **icons** on the dialog are:



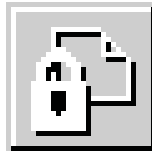
BOX SIZE: The size of the drawing's miniature image on the index. The default is 4 which indicates an area 4 cells square (i.e., 4 cells wide by 4 cells deep). Select an appropriate size for your drawing. This is constrained by the number of Handles in the drawing — see below. There is no connection between box size and drawing size.



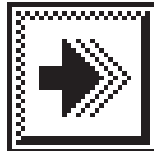
ADD INDEX: A shortcut to using LIBRARY: ADD INDEX, so that you can add an index without having to abort FILE.



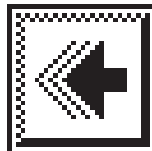
New Name: Allows you to rename the current index. On selection, you are prompted for a new name, which is given to the index.



Booking: If this icon is highlighted, Loads and Files on the Index are recorded (“Booked”). File Unbooks the drawing if it was Booked. On a networked or machine-sharing installation, you can turn Booking on and off by selecting the icon, unless the Index is set to Auto-Booking, when a warning will be produced: “Index has auto-booking which may not be disabled”. On a stand-alone installation, selecting this icon will produce an error message.



Next: display the next index (in order of their numbers). When the last index in the library is reached, the display `wraps around' and continues with the first index.

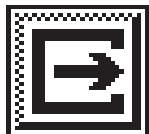


Previous: display the previous index in sequence. When the first index is reached, the display `wraps around' and displays the last index again.



Catalog: list the indexes in the library in a catalog. Select “Sort Index” to set the order in which the indexes are listed; you can display them in order of number, name, or date of creation, in forward or reverse order.

You can select an index by positioning the cursor over its name and clicking the button. Select **Exit** to leave the catalog.



Exit: leave FILE and return to the drawing without saving it on the index.

Details: You can move to a different Index by selecting the Index Number or Index Name information fields on the palette, and then typing the number or name of the new index into the input window produced. Press **Enter** to move to the new index.

Handles If the drawing contains Handles, these are displayed so that you can use them later to retrieve the drawing from the library — they become Insert handles when you Insert the drawing. If there are no handles, Accucadd adds one in the center of the drawing. You will see it displayed as a small triangle when the index is displayed.

We suggest that you limit the number of handles in your drawings to make it practicable to select a drawing by the right handle. As a guide, use no more than 8 handles in the smallest box (size 1), and no more than 2048(!) in the largest (size 16). The most common size (size 4) would have a maximum of 128 on this basis. (The suggestion is to limit

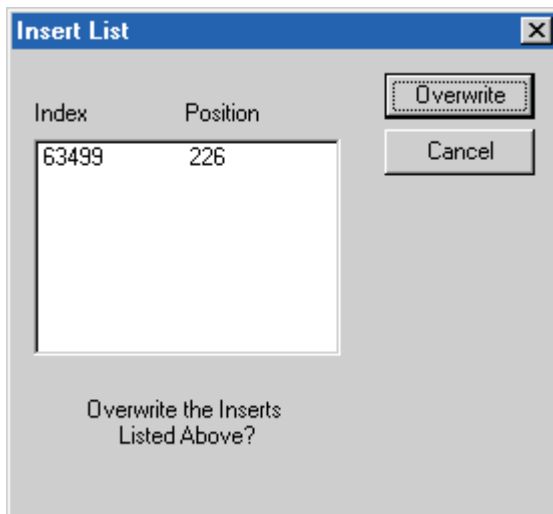
yourself to eight handles per “unit box” that your drawing occupies.) These do not have to be evenly distributed.

Layers Whenever you File a drawing, Accucadd saves a copy of your current Layer Table, as described under Set Up: Layer Table. This ensures that the current Layer Table is always up-to-date.

Accucadd format data Accucadd uses a new, higher-precision, format for storing drawings than previous systems, such as RoboCAD 20.

When you File a drawing, Accucadd always saves it in the new format, converting all the old data. The old format versions of drawings aren't removed automatically — they remain in the library until you remove them. See Appendix D.2, “Library Conversion”, for details.

Multiple Libraries - Inserts If a drawing contains inserts, and all the inserts came from the same library that you are filing to, there is no need to do anything special.



If the drawing is being filed onto another library (i.e. you have changed the library `pathname` since starting the drawing), then the inserts from the “other” library will need a “home” in this library. If this was not taken care of then it would be impossible to use the drawing later on—the inserts would be missing.

Accucadd will try to File these Inserts automatically. However, some of them may already exist in the new library—drawings exist on Indexes in the current library with the same index numbers as the Indexes in the library that the Inserts were originally taken from, and also at the same positions. In this case Accucadd will produce a warning “Referenced Inserts exist in this Library — Overwrite?”. A list of Inserts in the drawing that already exist in the Library is shown on the screen at the same time.

Select **Overwrite** from the warning palette to overwrite the Inserts in the Library, or **Cancel** to avoid this, and make use of the versions of the Inserts already in the library. Appendix D, “Library Management”, explains this in more detail, and you should refer to it when you encounter this situation.

Networking and multiple users:
Booking and Un-booking

Booking was introduced to control access to shared drawings with older operating systems that had poor or no access control features. Since Accucadd will not work with operating systems prior to 32 bit Windows versions, we recommend that access control now be done by the operating system in the usual way. Booking is not recommended, but provided for backward compatibility and upgrade from previous versions in which Booked drawings may already exist.

If you are Over-filing a drawing that is Booked (to you) and you are using Booking, a warning: "Do you wish to un-book this drawing" is produced. If you are about to stop work on the drawing, click **OK**, otherwise click **Cancel**. If you are not using Booking, the drawing isn't unbooked. If the drawing is Booked by another user, a warning is produced: "Drawing is already booked"; and you cannot overfile the other user's drawing. (You can always file your version of the drawing somewhere else, leaving the original unchanged.).

Warnings: There is one special case where FILE is forbidden: If a drawing (say A) has been filed, and later used as an insert into another drawing (say B) then B cannot be allowed to overfile A, as by doing so, it would destroy part of itself. If you attempt to do this, an error message: "Your Drawing Depends On This Data" is produced.

Backward Compatibility Accucadd can make use of all libraries created by earlier versions of our software. It can File into such libraries and will create Logging (and Booking) data within them. No previous version (RoboCAD) will be able to make any use of data Filed with Accucadd. When Accucadd tries to load a drawing it first looks for that drawing in Accucadd (rlf) format. If-and only if-it does not find it, it will then look for the drawing in RoboCAD (PACKnnn) format. This has the following consequences:

If the `RoboCAD 20' format versions of drawings that have been automatically converted (see above) remain in the library, older systems will be able to Load them. However, this is not recommended, as the `20' format versions will not include changes made with Accucadd, and the Accucadd format versions won't include any changes made with a `20' format drafting program after the initial conversion. Appendix D.2, "Library Conversion", describes controlled and orderly library conversion.

Advanced: If two users on a network are attempting to use the same Index at the same instant in time, one will be prevented from doing so until the other finishes. An updated image of the Index will then be produced.

Load retrieves a drawing from a library index into the computer and displays it on the screen, replacing the current drawing, if any. It is the same as File: Open. (If you are using Booking, the drawing is automatically booked out to you.) To Load a drawing without replacing the current one, first select File: New Page. To Load a drawing saved as a file, use Library: Import RDF.

Preparations If you select Load while you have a drawing on the current page, you are warned that your current drawing will be lost, on the warning palette, and given a chance to abort Load by selecting **No** from the palette, or continue with it by selecting **Yes**. To keep your current drawing, and load another, first select File: New Page.

Mouse selection Accucadd presents the library index palette and an index from the current library. You can select an index using the index palette.

To load a drawing, position the cursor over one of its handles (small triangles, pointing upwards). The drawing's image will be highlighted as you move the cursor onto its handles. Click the button to confirm the selection and take the drawing back to the drawing page. If you click the button before a drawing is selected, nothing will happen. To leave Load without selecting a drawing, select the **Exit** icon from the palette.

The Index palette is described in detail under Library: File

Keyboard Selection With the index palette on-screen, type the box number of the drawing you want. You may add a handle number, separated by a comma, but this has no effect when using Load. For example, to load the drawing in box zero on index 22, type 0 while index 22 is displayed. As soon as you start typing an input window will open automatically.

A chart of box numbers will be found in Appendix D.

Loading: The drawing is restored to the screen as a collection of separate Entities, just as it was when first drawn. This allows you to edit the drawing and re-file it in the same place (updating it), or at another index location (creating a new version).

When drawings are retrieved, they overwrite any drawing that was originally on the screen. Additionally, Accucadd adopts the scale and paper size set when the drawing was filed, and the view is set to 'base view'. Please note, however, that the Layer Table is not part of the drawing, and won't usually be altered by Load (but see Set Up: Layer Table for more details).

Networking and Booking: If Booking is in use (see Library: File: Booking), loading a drawing automatically books it out to you, if it is not booked out to another user. A drawing is booked back in (unbooked) by Filing it again, in the same position on the Index (over-filing it).

If a drawing is Booked to another user, a warning is produced: "Drawing is already booked", when you attempt to Load it. It is possible for you to Load it, but you should not do so if you intend to alter it unless you intend to file it in a new place (conceptually your version of the drawing). If you file it back where it came from you risk destroying the other user's work. See Library: Book & Log for more details.

Details: The Index Information Dialog (to the right of the index page itself) displays the box number (position), date and time last filed, and the Booking status of each drawing when you position the cursor over its Handle.

Conventions: Although Accucadd has an automatic backup scheme, it is still worthwhile to File the drawing periodically while working on it. This is an extra measure of protection against failure of the computer or power supply. It is sensible to overwrite previous versions of the drawing while doing this, to save index space.

Since the automatic backups are saved in the folder Accucadd is installed in (typically C:\Program Files\Accucadd) then if you periodically file *to a physically different disk drive* you are protecting your current drawing against catastrophic disk drive failure.

Backward compatibility When you Load a drawing produced with RoboCAD 20 or an earlier version, it is converted into Accucadd format. The copy in the library will not be altered unless you File it back there — see File for details.

Data from versions of RoboCAD prior to RoboCAD-PC version 3.0 is assigned color 0 and is placed on layer 0. Booking and Logging data is created in old libraries if you use them with Accucadd, but is ignored by versions prior to RoboCAD 20.

This function is used to delete and copy library Indexes. You cannot copy or delete an Index if any drawings on it are Booked. This applies even if they are Booked to you.



A window is displayed for you to select the action required:

Copy Index

Select this action to copy an Index from one library—the *source library*—to another—the *destination library*. The source library is assumed to be the current library, and a dialog is displayed showing a list of indexes in it. Click **Cancel** to stop the copy, click **Change Path** to choose a different source library, or else click on the index you want to copy. When you have selected the index, click **OK**.

You can select more than one index using the usual Windows Shift-Click and Ctrl-Click combinations.

Next the Library: Set Path (qv) pops up so you can choose the destination library—the library to copy the chosen index(es) to. Select the destination library, and click **OK** to continue.

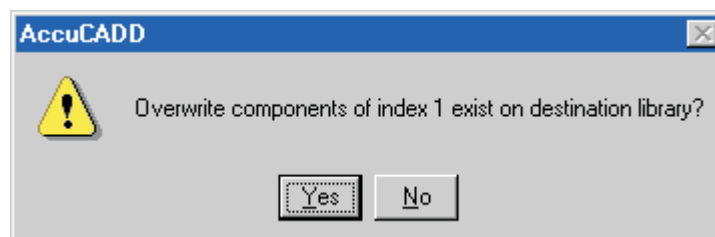
What happens next depends on whether the index you are copying already exists in the destination, and whether there are any inserts in your drawing that also exist in the destination library.

No index or insert clashes

If the index does not exist in the destination, *and* no inserts in the drawings in that index exist in the destination, then there are no issues to resolve and the copy proceeds invisibly. As soon as it is done your cursor will reappear—this may take a few seconds for an index with lots of big drawings in it, or even a few minutes if floppy disks are involved.

No index clashes, but Inserts exist

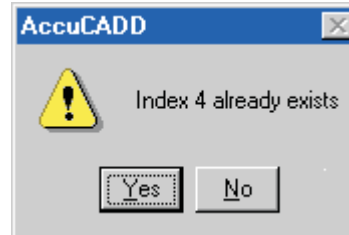
If any drawings in the source Index contain Inserts from other Indexes (“external components”), Accucadd checks the destination library to see whether those Inserts exist there as well. If the Inserts are not present in the destination Index they are simply copied from the source library. If some (or all) of the Inserts are duplicated in the destination library a warning is displayed: “Overwrite components...”. Select **Yes** to overwrite (replace the duplicated inserts with the ones from the source library), or **No** to keep the inserts in the destination as they were before copying. If in doubt choose No to avoid an uninten-



tional global update (see ...). As soon as you select one or the other, the copy operation takes place.

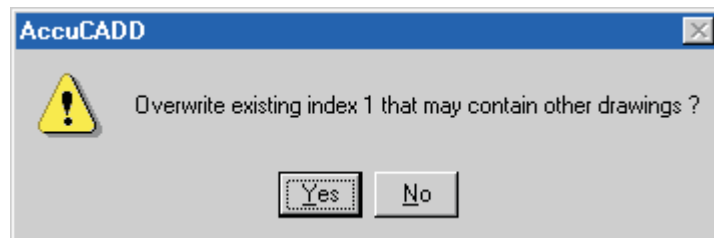
Index exists, but no duplicate inserts

If there are no inserts in the drawings in the source index that already exist in the destination library, but an index with the same number as the one you are about to copy does exist in the destination library, then the first dialog is:



Select **Yes** to continue, or **No** to abandon the index copying, making no changes.

If you choose to continue, and click Yes, the next decision is whether overwrite the existing index (replacing it with the one you are copying), or to assign the index you are copying a new index number in the destination library. This is the dialog:



Select **Yes** to replace the index already existing in the destination library. All drawings in that index will be lost unless they are also saved elsewhere. As soon as you click Yes the overwriting starts. It may take anywhere from a second or two to a few minutes, depending on the amount of data and the speed of the storage media.

Select **No** to keep the index already existing in the destination library unchanged, and to give the index you are copying from the source library a new index number. Accucadd will ask you to type in a new number—the “old” index name will be preserved. As soon as you enter the new index number, copying starts. It may take anywhere from a second or two to a few minutes, depending on the amount of data and the speed of the storage media.

MAINTENANCE

LIBRARY

Both the index number and inserts exist in the destination

This is the “worst case,” and Accucadd will have to ask you all the above questions to get the job done. The dialogs are all described in detail in the above sections.

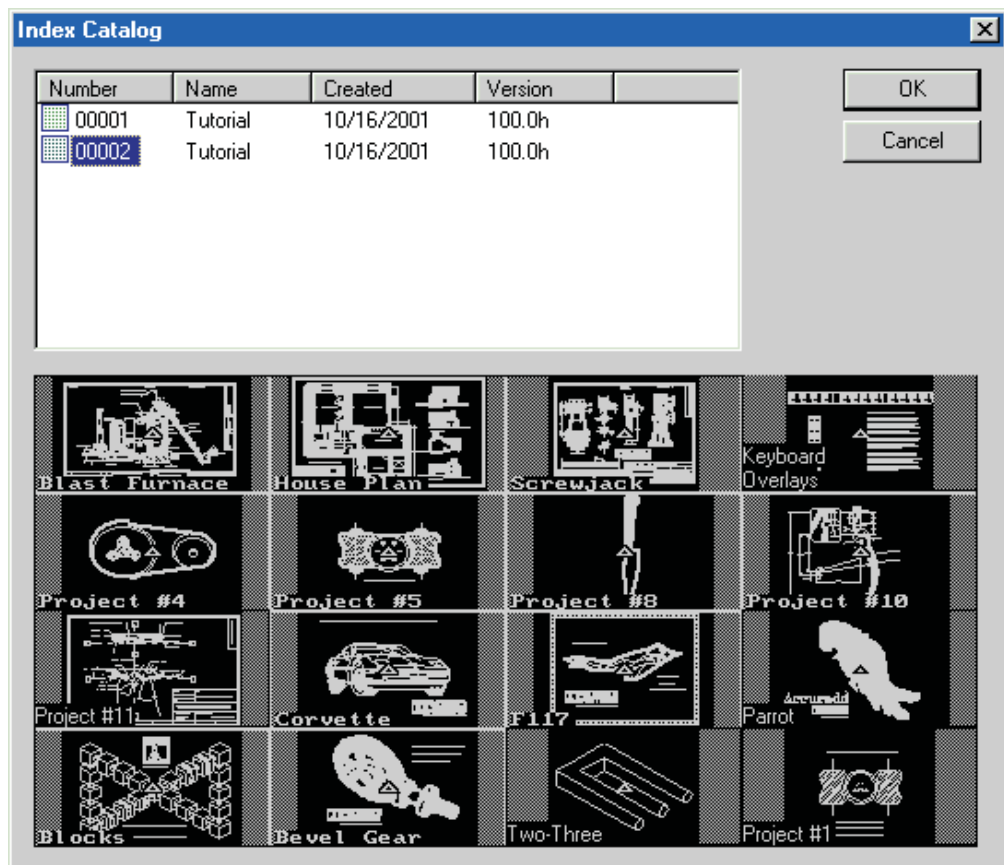
Since the same inserts exist in both the source and the target indexes, the first question is whether you want to overwrite these inserts (components), as described above.

Next, since the index itself also exists in the destination, you’ll be warned about this, and given the option to escape without making changes, again as above.

If you choose to continue, the last dialog will ask you whether you want to overwrite the existing destination index, or copy the source index into the destination library with a different number, again as above.

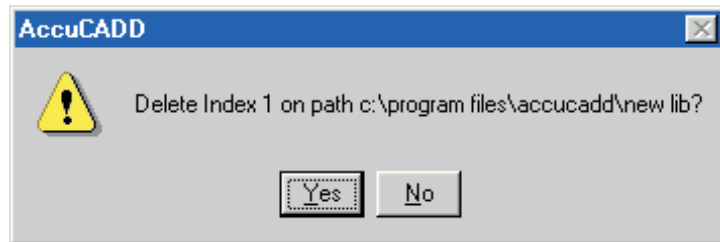
Delete Index

Select this action to remove an Index from the current library. A catalog of the Indexes in the current library is displayed. Select the Index you wish to delete with the cursor.



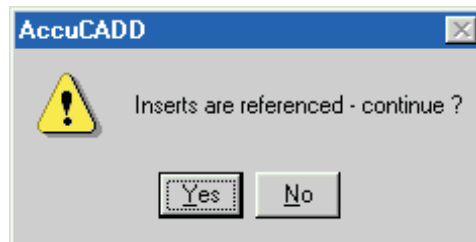
The chosen Index is displayed. Select **OK** to delete the index, or **Cancel** abandon the deletion and exit this function, keeping the index as in place unchanged.

If you select **OK** you get the following dialog. This is your last chance:



once you confirm the deletion by selecting **Yes** then the index will be removed. **This operation cannot be Undone.**

Accucadd checks if any of the drawings in the index that you are about to delete are used as Inserts in drawings in other Indexes in the same library path. If so, Accucadd displays a warning palette containing options to quit (**No**) without deleting the Index or to continue (**Yes**).



If you decide to continue, all Inserts from the Index which are used elsewhere are copied to the Common Index (index 00000) before the selected Index is deleted. The Common Index is described below.

Warnings: You should only delete an Index when you have no drawing loaded into the computer. Only select DELETE INDEX immediately after one of:

- Starting up Accucadd, or
- Using WIPE on *all* the drawing pages

Be sure that you have a copy or backup of the Index before you delete it; the drawings it contains will otherwise be lost forever.

Booking You cannot delete an Index if any drawings on it are Booked. This applies even if they are Booked to you.

Common Index
IDX00000

There is a Common Index in each Accucadd library. It exists to hold drawings in the library that do not have an Index themselves. Such Inserts are created either by using Delete Index, or by moving drawings into one library from a different library.

Inserts in the Common Index may only be accessed via Isolate from the drawing which contains them. If you then File the Insert in another Index you will be able to use it as normal in new drawings. Any drawings which already use the Insert will continue to use the version in the Common Index.

The Common Index is fully described in Appendix D, "Library Management".

This function adds an index to a library diskette or a fixed disk library.

New Index number =

New Index name =

Indexes are added to the current library, as selected with Set Path. Until a library contains at least one index, you will not be able to use it.

Enter a name and number for the index when prompted. The name may be up to 8 characters long, and the number may be any number between 1 and 59999. If you press **Enter** instead of typing a number, Accucadd chooses the next free number available. The name must be at least one character long.

Diskette libraries

When working with diskette-based libraries, each diskette is a library in its own right.

Using more than one library

Inserts from other libraries will be kept in a special index, called the Common Index, in the folder IDX00000. The Common Index is explained fully in Appendix D, "Library Management".

Names and Numbers

Indexes in a library may not have the same *number*, but any number of them may have the same name. If you attempt to select an index by name, when several indexes have that name, the lowest-numbered one will be selected. It is not generally useful to have several indexes with the same name.

Warning:

NEVER CREATE INDEXES WITH THE SAME NUMBERS IN DIFFERENT LIBRARIES.

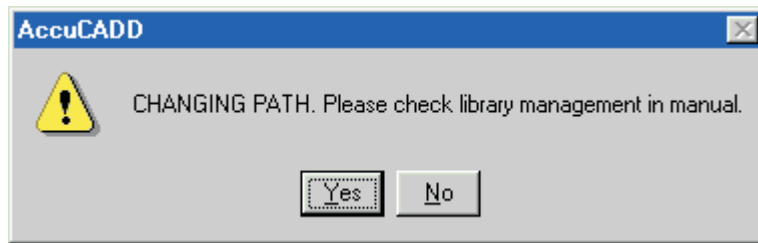
There are exceptions to this rule, but please follow it unless you have read and understood how the library system operates. See Appendix D, "Library Management," for a description of how to allocate index numbers in a well-planned library structure.

SET PATHNAME

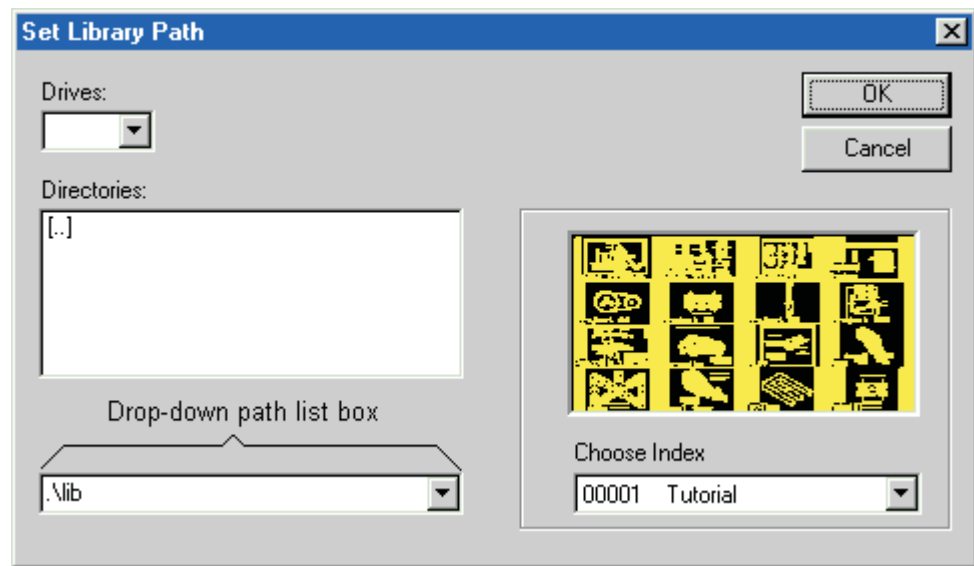
LIBRARY

This function allows you to select the folder (directory) path for your current library. Unlike previous versions, it is not used for selecting folders for RDF and other files.

A warning dialog is displayed to remind you that using more than one library path may produce side effects - see Appendix D. Click Yes to



continue, or No to cancel the operation. Once you have clicked Yes, you'll get the Set Library Path dialog, below.



Set Library Path Dialog This dialog allows you to select the disk drive, and directory (folder) that contains your target library.

There are two basic ways of using it:

If you have previously used the target library (from the same version of Accucadd, and on the same computer, as you are now using) then you can select it from the drop-down path list box. Simply click on the arrow, and choose from the list. If the list is long you may have to scroll through it.

If you have not previously used the library (as noted above) then select the disk drive using the Drives list box, and then the folder (or

directory) on that drive by choosing it from the list in the Directories window.

If you are using a (remote) networked drive, it should have been assigned a drive letter by your system administrator so you can access it easily.

You can also click in the drop down path list box, and enter a path name directly. You may do this by typing, by cut-and-paste, or by using both in combination. If you do this you can include a computer name instead of a disk drive letter, for example:

```
\\moon\moon-c\program files\accucadd\office
```

where "moon" is a computer name, "moon-c" is the share name of the C: drive on moon, and the remainder is a path name in the usual format. Note the double backslash (\\) introducing the computer name. You may not be familiar with this notation, but it is the Windows networking standard.

If you type in a path name that does not exist, Accucadd will ask you if you want to create it—see Library:Set Pathname for details.

To use a pathname that is not in the catalog, type it on the keyboard; press **Enter** to terminate it. If you name a path that does not exist (or does not contain a library) Accucadd tells you so and asks whether to create it or exit. Move the cursor over the required action and click the button.

Shared libraries If you are sharing a library with other users, be very careful when you file drawings. If you overfile one drawing with another, the system will replace any inserts made using that drawing with the new version.

Multiple libraries You can partition your disk into separate libraries to isolate drawings saved in one library from the editing of component inserts saved in another. Caution is needed, however, in moving drawings or inserts between the libraries.

Please read and understand Appendix D ('Library Management') before working with several libraries at the same time, or moving data between libraries.

Conventions: You are advised to start your pathnames from the DOS root directory (\\), rather than the System Directory, to give yourself more room in the pathnames. For example,

```
C:\library\symbols\electron\ISO\resistor
```

is perfectly valid.

If you use more than one fixed disk or diskette for holding libraries, it is important to give the complete pathname for each library you access. For example, if you were working with two fixed disks, drives C: and D: and a diskette drive A:, then you should refer to each library with a pathname including the drive name and starting from the root (base) directory of each drive, so that you are not relying on the DOS defaults, which can be unsafe. For example, where C: is your default drive (usually the case for the set-up described above), you should refer to each library by a name like:

C:\library or
D:\library\ISO

It is important to include both the drive letter, and the backslash following it that means 'start from the root directory'. DOS will supply default settings if you miss out these parts of the pathname, and this can have unexpected and strange effects. We apologize for asking you to take such stringent precautions, but it is due to the rules imposed by DOS.

Warnings: When working with libraries on diskettes, it is advisable to re-set the pathnames each time you change diskettes. Accucadd can recognize that a diskette has been changed and act accordingly, but it is not possible to tell if a diskette is replaced by one that was copied from the first diskette.

For example, if a back-up is taken of a diskette using DISKCOPY, and one copy is used as the library disk for drawing, and then replaced by the other copy, Accucadd cannot tell that this has occurred. If the pathname is re-set, this does not matter, as Accucadd will be expecting a new library in any case.

A: and B: A final subtlety exists when you use diskette files or libraries on a computer with only one diskette drive. DOS allows the drive to be referred to both as **A:** and as **B:**, and normally prompts you to change diskettes and press a key. With Accucadd, this is important only when you change the pathname from **A:** to **B:** on a computer with only one diskette drive. DOS will wait for you to press a key before it will read the new diskette; Accucadd doesn't know this is happening and cannot prompt you.

Advanced: The list of pathnames is saved in a file called **RC_LIB.CAT** in the System Directory. On a networked or machine-sharing installation of Accucadd, this file is located via the Search Path (see the Accucadd Network Installation Guide for details). The function OUTPUT: PATHNAME also sets pathnames, for various types of file that are produced by Accucadd and cannot be read in again. Its description gives more details.

For more information about directory pathnames, see your DOS manual.